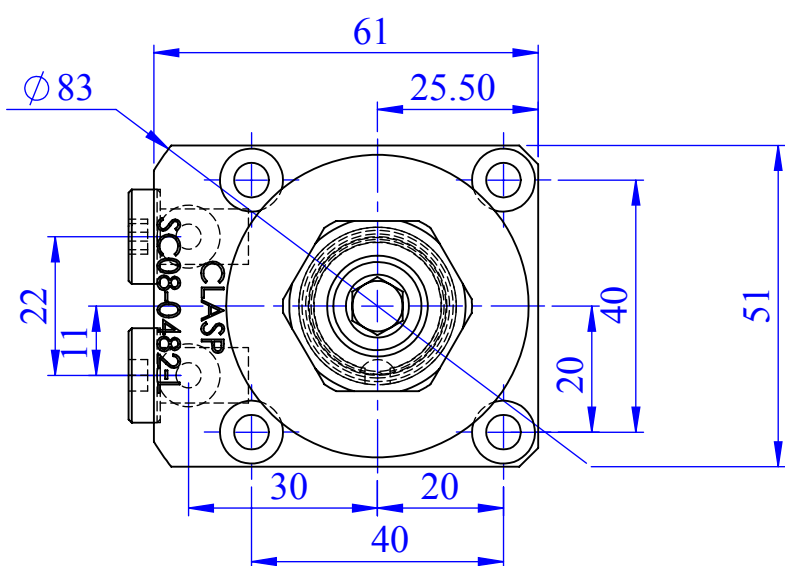
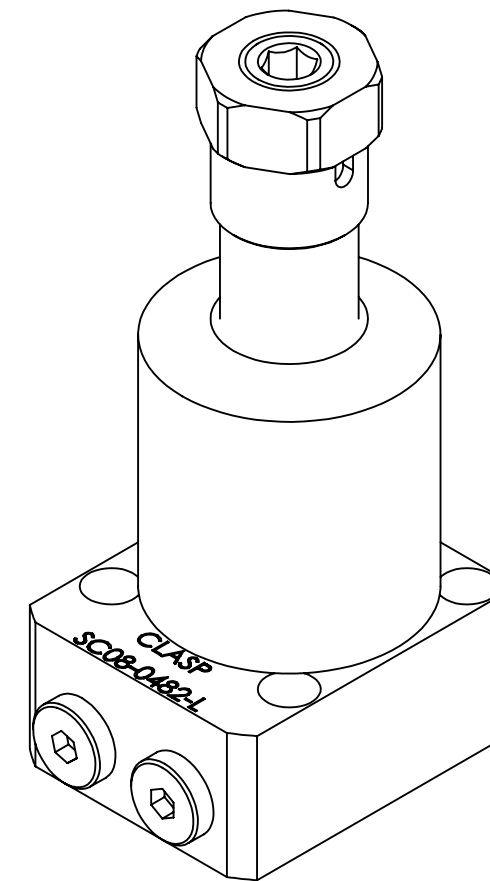
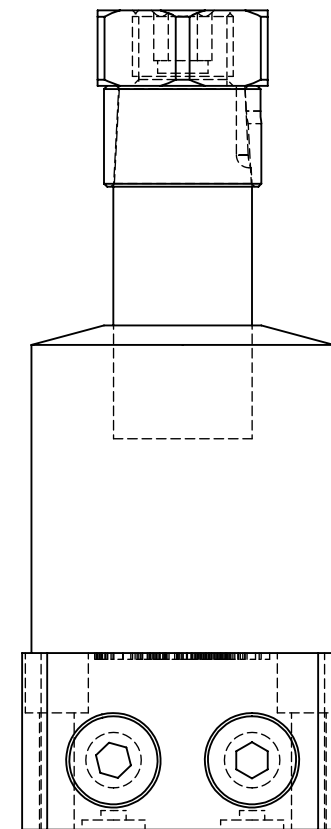
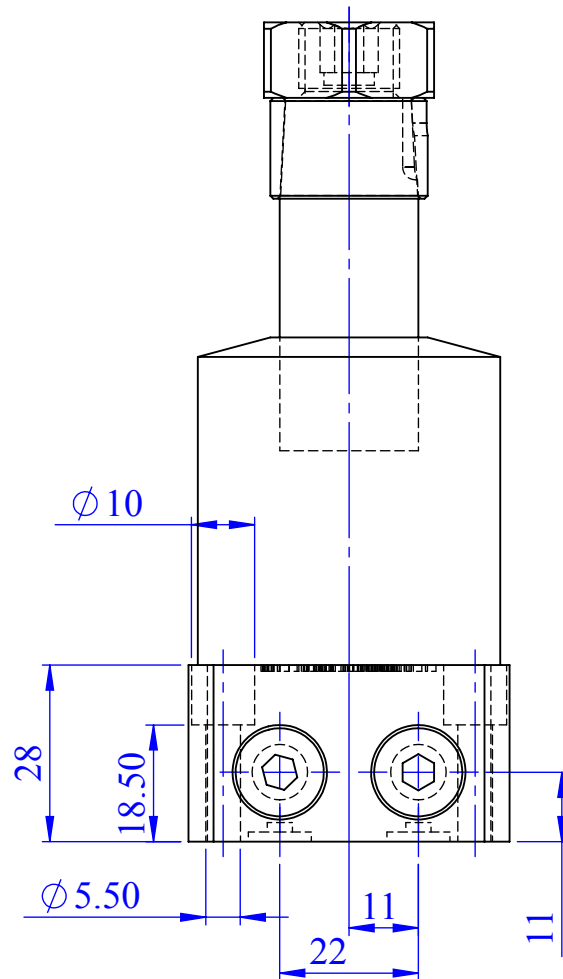
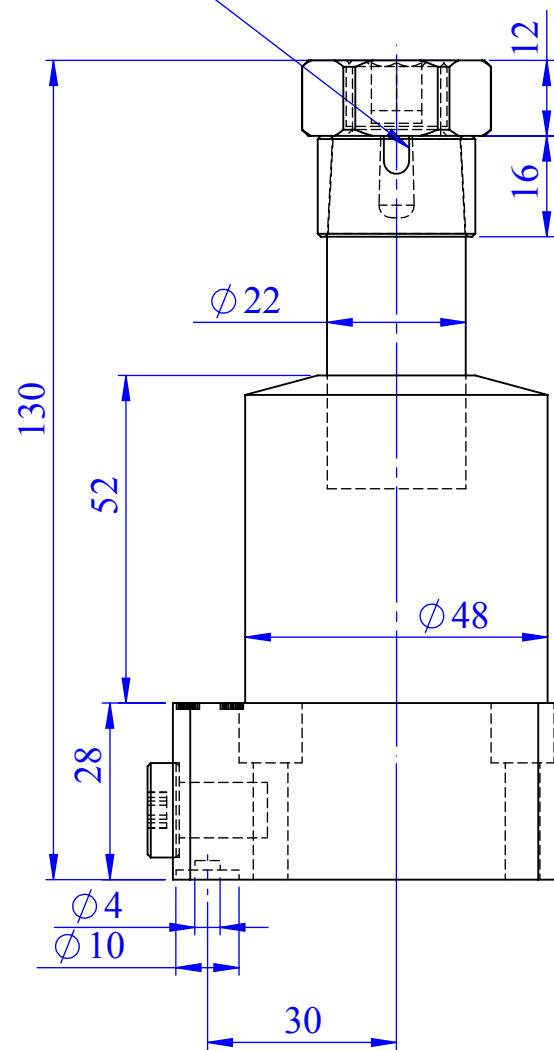








SLEEVE



SC08-0482-L

Bore dia - 35mm
Piston dia - 22mm
Swing stroke 90° -10mm
stright stroke - 10mm
Full stroke - 20mm

Surface Finish																ZONE	SCALE	1:1	PROJECTION	
Ra Value μm	0.025	0.05	0.1	0.2	0.4	0.8	1.6	3.2	6.3	12.5	25	50	100			MATERILAS				
Ra Symbol	N1	N3	N2	N4	N5	N6	N7	N8	N9	N10	N11	N12					GROUP No:—	WEIGHT		
																	SWING	Wt.Kgs		
			DESCRIPTION													Qty.	01	Casting/forging/ welding drg.no		
Drawn	Prabhakar		DESCRIPTION																	
Checked	Prabhakar		SWING CYLINDER																	
Approved	19/09/21		SC08-0482-L																	
Date	19/09/21															Drawing NO				
Clamping elements type			CLASP BANGALORE-72													SHEET: 1 of 1		Sheet No: 1/1		

General Tolerance where not specified									
Liner - length or Diameter					Angular-length of shoter side of the angle				
0.5-6	6-30	30-120	120-315	315-1000	1000-2000	Upto 6	6-30	30-120	120-400
±0.1	±0.2	±0.3	±0.5	±0.8	±1.2	±1°	±30°	±10°	±20°